

pharm-a-spheres™



Hanns G. Werner
GmbH + Co. KG

SUGAR SPHERES

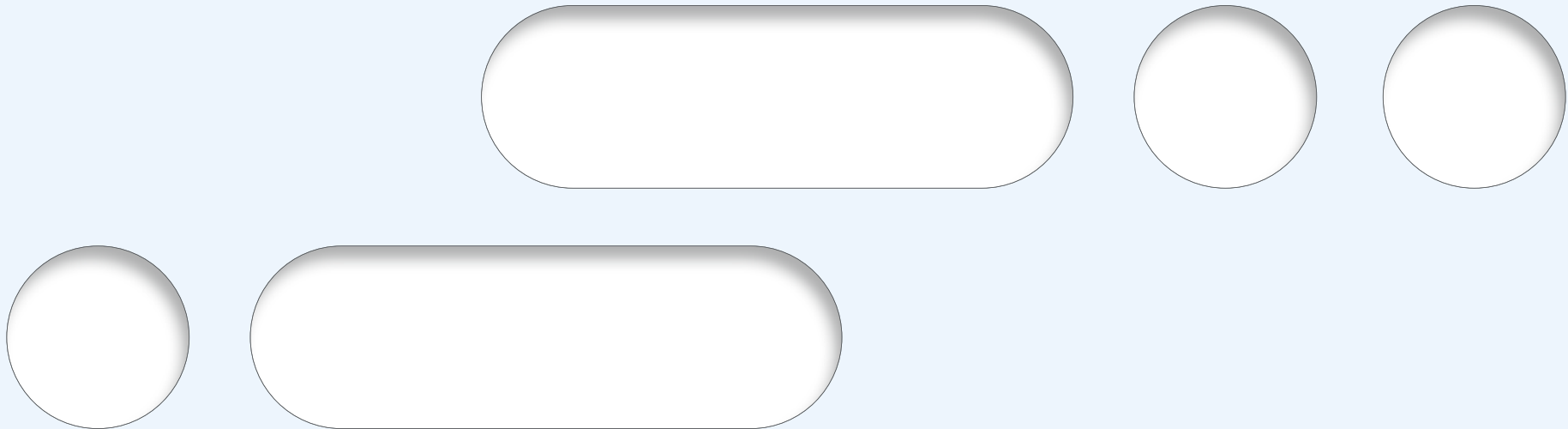
GLOBULI SACCHARI

GLOBULI FROM XYLITOL

GLOBULI SUCROSE/LACTOSE

pharm-a-spheres™

... a family business in the 3rd generation



Jan Werner
Technical Director



Niels Werner
Sales and Marketing Director



Dr. Philipp Werner
Quality and financial Director

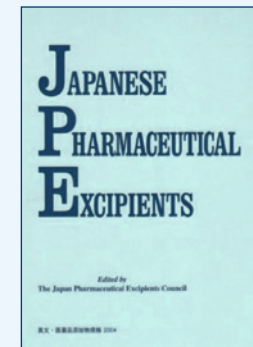
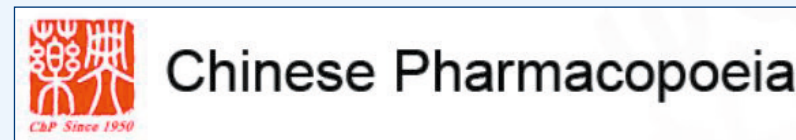


PHARMACOPOEIAL CONFORMITIES

Pharm-a-spheres™ sugar spheres conform to the pharmacopoeial monographs for sugar spheres in the USP/NF, EP, CP, JPE and others. Production and testing is according to the IPEC GMP guidelines.

These are the preconditions for the worldwide acceptance and easy registration for any regulatory drug applications.

- Worldwide acceptance
- Easy registration for regulatory drug applications



There is a registered DMF at the FDA.

SUGAR SPHERES

... carrier for your sustained-release formulation

Sugar spheres, also called neutral pellets or nonpareil seeds, are a non-active, spherical pharmaceutical excipient. They consist of indifferent ingredients. They are used as cores in the manufacturing of sustained-release pellet preparations.

The pharm-a-spheres™ sugar spheres conform to all international pharmacopeias as EP, USP/NF, CP and JPE according to the respective monographs. pharm-a-spheres™ are made with natural European, GMO-free ingredients: sucrose and (maize) corn starch.

Due to our unique manufacturing process the pharm-a-spheres™ sugar spheres have the following advantages:

- High degree of sphericity
- high mechanical stability (no attrition, low friability)
- non-porous surface

Production and testing are carried out at a high level in conformance to an ISO 9001 quality management system and to the IPEC (International Pharmaceutical Excipients Council) GMP guide. An FDA drug master file is available.

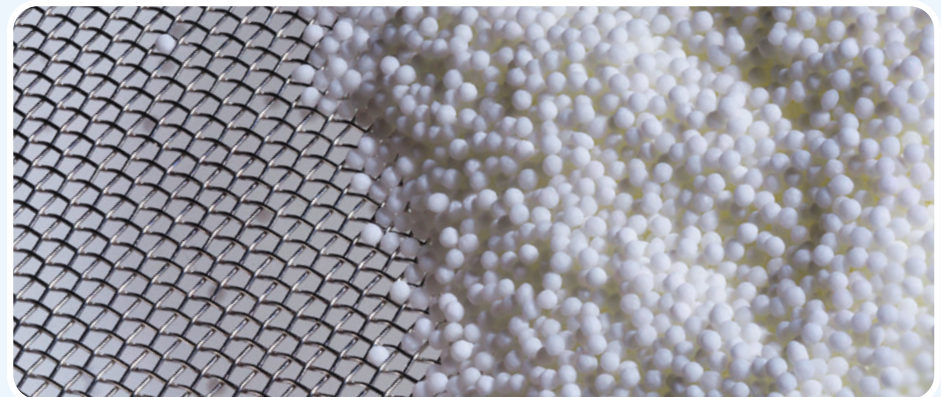
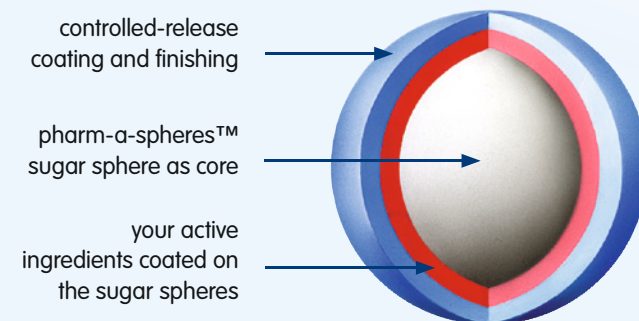
A sophisticated combination of technological capabilities and analytical skills allows us to offer tailor-made, reproducible particle size distributions (PSD).

The pharm-a-spheres™ sugar spheres are available in the full range from 90 to 500 microns (microspheres) and from 0,5 to 2 millimeters (neutral pellets).

More than 45 years of experience in the manufacture of sugar spheres gives customers quality and delivery assurance. There is various knowledge in additional parameter testing and application support will be provided after demand.

All test results mentioned in the certificates of analysis are done in our in-house laboratory.

State of the art equipment and excellent employees guarantee conformity to our standards.



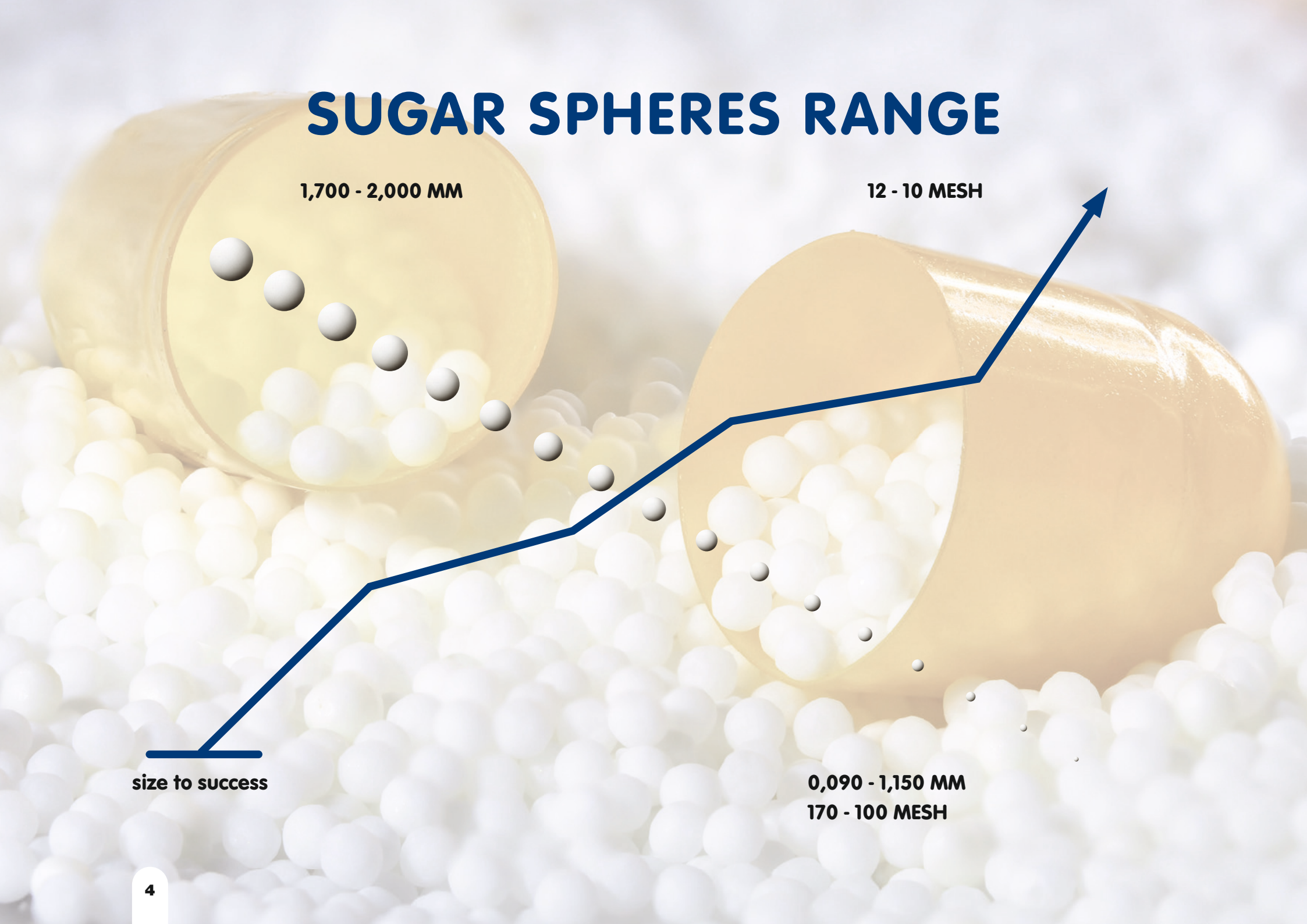
SUGAR SPHERES RANGE

1,700 - 2,000 MM

12 - 10 MESH

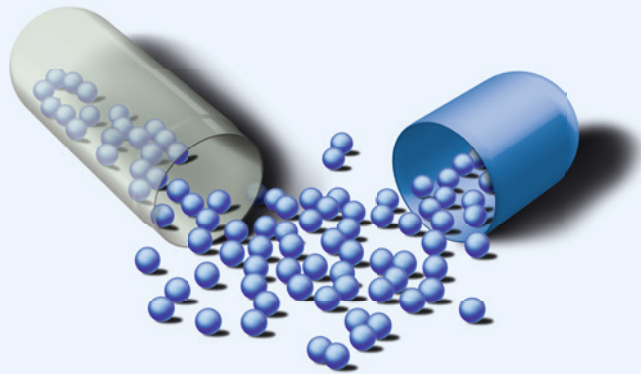
size to success

0,090 - 1,150 MM
170 - 100 MESH

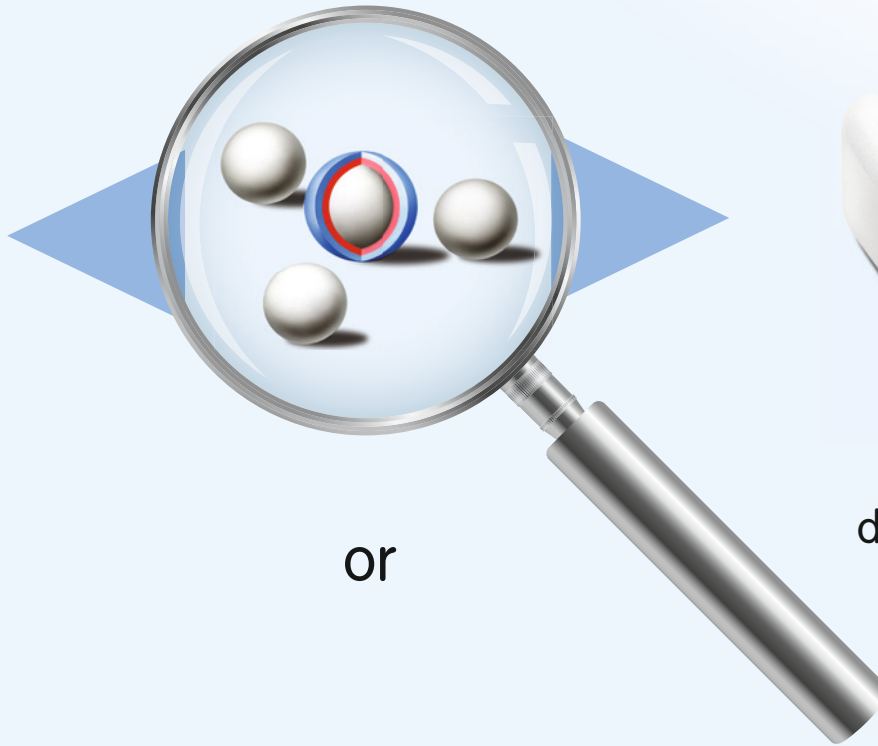


SUGAR SPHERES

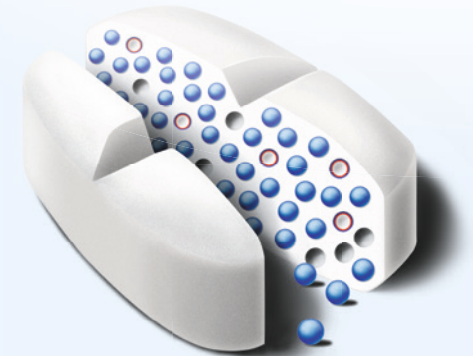
Customers applications



drug loaded filled
into capsules

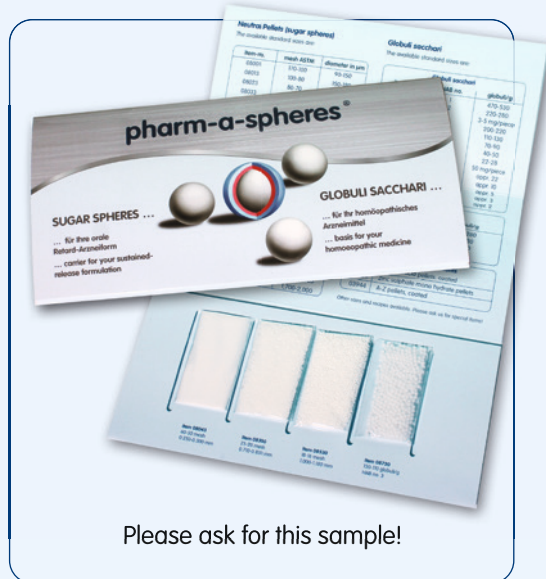
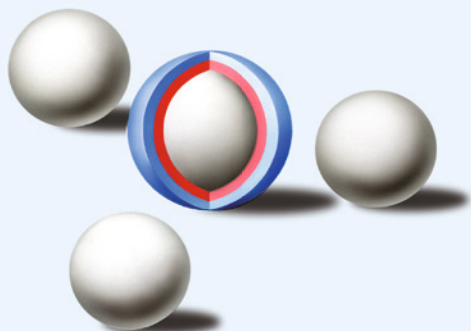


or



drug loaded pressed
into tablets (MUPS)

pharm-a-spheres™



Please ask for this sample!



The Mesh Converter

can be found on our website. Please scan the QR-Code.

Sugar spheres

The available standard sizes are:

item-no.	mesh ASTM	diameter in µm
08001	170 - 100	90 - 150
08013	100 - 80	150 - 180
08023	80 - 70	180 - 212
08025	80 - 60	180 - 250
08033	70 - 60	212 - 250
08035	70 - 50	212 - 300
08043	60 - 50	250 - 300
08050	50 - 45	300 - 355
08052	50 - 40	300 - 425
08053	60 - 40	250 - 425
08062	45 - 35	355 - 500
08063	45 - 40	355 - 425
08065	50 - 35	300 - 500
08073	40 - 35	425 - 500
08130	35 - 30	500 - 600
08150	35 - 25	500 - 710
08230	30 - 25	600 - 710
08250	30 - 20	600 - 850
08330	25 - 20	710 - 850
08350	25 - 18	710 - 1,000
08430	20 - 18	850 - 1,000
08450	20 - 16	850 - 1,180
08530	18 - 16	1,000 - 1,180
08630	16 - 14	1,180 - 1,400
08643	16 - 12	1,180 - 1,700
08653	14 - 12	1,400 - 1,700
08663	12 - 10	1,700 - 2,000

Other sizes and recipes available. Please ask us for special items!

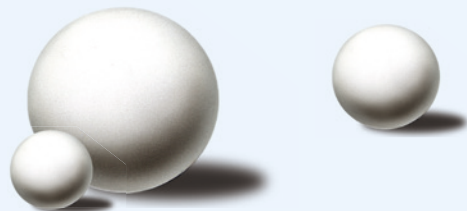
GLOBULI

... basis for your homoeopathic medicine

Globuli sacchari

The available standard sizes are:

item no.	HAB no.	globuli/g
08710	1	470 - 530
08720	2	220 - 280
08725	-	200 - 333
08730	3	110 - 130
08731	3	110 - 130
08740	4	70 - 90
08750	5	40 - 50
08760	6	22 - 28
08765	-	appr. 20
08770	7	appr. 10
08780	8	appr. 5
08790	9	appr. 3
08795	10	appr. 2



Xylitol globuli	
item no.	globuli/g
08812	220-280
08813	110-130
08814	70-90
08815	40-50

Xylitol/calcium-carbonate globuli	
item no.	globuli/g
088245	70-74 pieces

nutritional supplements	
03917	Ascorbic acid pellets, coated
03920	Zinc sulphate mono hydrate pellets
03945	B-complex pellets

saccharose-lactose-globuli		
08832	„globules“	200 – 220
08836	„granules“	appr. 22

pharm-a-spheres™

RAW MATERIALS

- all natural ingredients
- digestible
- biodegradable
- fully EU preferential
- GMO free
- allergen free



QS / LABORATORY

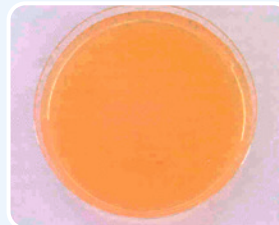
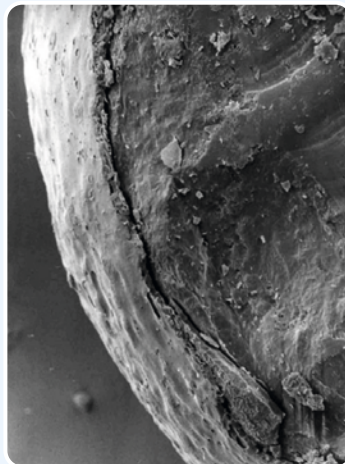


finished product testing:

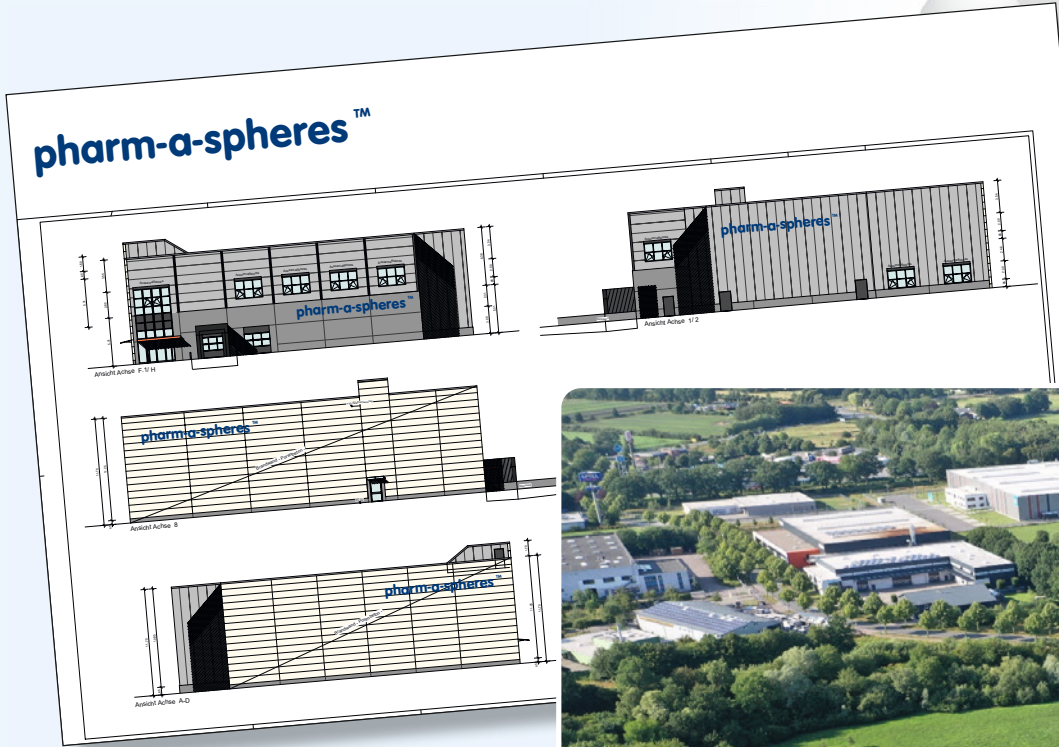
- All parameters of EP and USP e.g.:
- PSD (particle size distribution) and
 - all sieving analysis's
 - mechanical stability
 - sucrose content
 - etc.

raw material testing:

All raw materials are under the control of pharm-a-spheres quality control. The laboratory in house is fully equipped and state of the art.




PLANS FOR THE FUTURE



Our ground in Tornesch in the industrial park "Lise-Meitner-Allee"

COMPANY

pharm-a-spheres™

 pharm-a-spheres™ – ein mittelständisches Familienunternehmen in der 3. Generation, gegründet 1952 durch Herrn Hanns G. Werner. Geführt wird das Unternehmen nun durch die Inhaber und Familienmitglieder Jan Werner (Techniker), Niels Werner (Kaufmann) und Dr. Philipp Werner (Lebensmittelchemiker).

Das Unternehmen beliefert weltweit ca. 1.500 Kunden und beschäftigt über 150 Mitarbeiter.

Bereits 1974 wurden die ersten sugar spheres hergestellt und an die deutsche pharmazeutische Industrie geliefert. Es folgte eine kontinuierliche Steigerung der Produktions- und Verkaufsmengen.

Inzwischen sind pharm-a-spheres™ sugar spheres die bedeutendste und größte Abteilung im Hause pharm-a-spheres™.

Zum Beginn der 1980ziger Jahre wurden Globuli sacchari, eine Produktgruppe für die homöopathische Industrie, zu einem weiteren, wichtigen Standbein.

Nahrungsergänzungsmittel-Pellets, hergestellt auf Basis der eigenen

pharm-a-spheres™ sugar spheres, runden das Sortiment für erfolgreich ab.

Qualität und Qualitätskontrolle haben höchste Priorität! Die Produktionsabteilungen und das firmeneigene Labor (alle Parameter der Analysenzertifikate nach EP und USP-NF werden im eigenen Labor durchgeführt) sind state-of-the-art und das Unternehmen ist zertifiziert.





pharm-a-spheres™ is a medium-sized, third-generation family business, founded by Hanns G. Werner in 1952.

The company is now managed by its owners and family members Jan Werner (technician), Niels Werner (merchant) and Dr Philipp Werner (food chemist).

The company has over 150 employees and supplies around 1,500 customers around the world.

The first sugar spheres were produced and delivered to the German pharmaceutical industry as early as 1974. This was followed by a continuous increase in production and sales volumes.

The pharm-a-spheres™ brand with the sugar spheres product group is now the largest and most important department in the company.

Globuli sacchari, a product group for the homoeopathic industry, became another important pillar in the early 1980s.

The range of products for customers is rounded off by food supplement pellets made with the company's own pharm-a-spheres™ sugar spheres.

Quality control is the company's top priority! The company has various certifications, state-of-the-art production departments and an in-house laboratory covering all EP and USP-NF analysis certificate parameters.

pharm-a-spheres™: una empresa familiar mediana que fue fundada en 1952 por Hanns



G. Werner y que se encuentra ya en su tercera generación.

En la actualidad, la empresa está dirigida por los propietarios y miembros de la familia fundadora Jan Werner (técnico), Niels Werner (empresario) y Dr. Philipp Werner (químico de alimentos).

La empresa abastece a unos 1500 clientes en todo el mundo y emplea a más de 150 personas.

Las primeras sugar spheres se fabricaron y suministraron a la industria farmacéutica alemana en 1974. Esto fue seguido por un aumento continuo en los volúmenes de producción y ventas.

La marca pharm-a-spheres™, con el grupo de productos sugar spheres, representa hoy el departamento más importante y de mayor tamaño de la empresa.

A principios de los 80, los denominados globuli sacchari, un grupo de productos para la industria homeopática, se convirtió en otro pilar importante.

Los suplementos nutricionales en gránulos, fabricados a partir de nuestras propias sugar spheres pharm-a-spheres™, completan con éxito la gama para los clientes.

¡La calidad y el control de calidad tienen la máxima prioridad! Los departamentos de producción y el laboratorio propio de la empresa (todos los parámetros de los certificados de análisis según EP y USP-NF se verifican en el propio laboratorio) son de última generación y la empresa está certificada.



pharm-a-spheres™ - une entreprise familiale de taille moyenne depuis trois générations, fondée en 1952 par M. Hanns G. Werner.

L'entreprise est désormais dirigée par les propriétaires et membres de la famille Jan Werner (technicien), Niels Werner (commerçant) et Dr. Philipp Werner (chimiste alimentaire).

L'entreprise fournit environ 1 500 clients dans le monde entier et emploie plus de 150 personnes.


Dès 1974, les premières sugar spheres ont été fabriquées et distribuées à l'industrie pharmaceutique allemande. Une croissance continue des volumes de production et de vente s'en est suivie.

Entre-temps, la marque pharm-a-spheres™, avec sa gamme de produits sugar spheres, est devenue le département le plus important et le plus grand de l'entreprise.

Au début des années 1980, les globuli sacchari, une gamme de produits destinés à l'industrie homéopathique, sont devenus un autre pilier important.

Des compléments alimentaires sous forme de granulés, fabriqués à partir de nos propres sugar spheres pharm-a-spheres™, complètent avec succès l'assortiment proposé aux clients.

La qualité et le contrôle de la qualité sont notre priorité absolue ! Les départements de production et le laboratoire de l'entreprise (tous les paramètres des certificats d'analyse selon EP et USP-NF sont effectués dans notre propre laboratoire) sont à la pointe de la technologie et l'entreprise est certifiée.

 pharm-a-spheres™ - un'azienda a conduzione familiare, di medie dimensioni, alla terza generazione, fondata nel 1952 dal Sig. Hanns G. Werner. L'azienda è ora gestita dai proprietari e membri della famiglia Jan Werner (tecnico), Niels Werner (agente di commercio) e dal Dott. Philipp Werner (chimico alimentare).

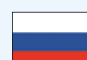
L'azienda serve circa 1.500 clienti in tutto il mondo e impiega oltre 150 dipendenti.

Già nel 1974 le prime sugar spheres furono prodotti e forniti all'industria farmaceutica tedesca. Seguì un continuo aumento dei volumi di produzione e di vendita.

Nel frattempo, con il gruppo di prodotti sugar spheres, il marchio pharm-a-spheres™ è diventato il reparto più importante e più grande dell'azienda. All'inizio degli anni '80, i Globuli sacchari, un gruppo di prodotti per l'industria omeopatica, sono diventati un altro importante pilastro.

Gli integratori alimentari nel formato "pellet", prodotti sulla base delle sugar spheres pharm-a-spheres™, completano con successo la gamma offerta alla clientela.

Qualità e controllo qualità hanno la massima priorità! I reparti di produzione e il laboratorio interno (tutti i parametri dei certificati di analisi EP e USP-NF vengono comprovati in laboratorio) sono all'avanguardia e l'azienda è certificata.


 pharm-a-spheres™ - это семейная компания среднего размера, основанная в 1952 году господином Ханнсом Г. Вернером. Бизнесом управляет уже третье поколение владельцев и потомков основателя: Ян Вернер (технический специалист), Нильс Вернер (экономист) и доктор Филипп Вернер (пищевой химик).

Сегодня компания насчитывает около 1500 клиентов из разных стран мира, в ней трудятся около 150 человек.

В 1974 году компания произвела и реализовала предприятиям немецкой фармацевтической промышленности первые сахарные сферы. Затем объемы производства и продаж этого продукта постоянно росли. Сегодня подразделение, которое отвечает за бренд «pharm-a-

spheres™» и соответствующую товарную группу «сахарные сферы», самый значимое и крупное в компании. В начале 1980-х годов был налажен выпуск еще одной важной товарной группы: сахарных шариков для гомеопатии. Довершают ассортимент компании pellets для производства биологически активных добавок к пище на основе фирменных сахарных сфер «pharm-a-spheres™».

Качество и контроль качества имеют для нас наивысший приоритет! Производственные подразделения и собственная лаборатория (в ней исследуются все параметры, входящие в сертификаты анализов согласно Европейской фармакопее (EP) и фармакопее США – Национальному формуляру (USP-NF)) соответствуют современному уровню развития науки и техники. Компания сертифицирована.

 pharm-a-spheres™ - 一家第 3 代中型家族企业, 由 Hanns G. Werner 先生于 1952 年成立。该企业现由持有人和家庭成员 Jan Werner (技术员)、Niels Werner (销售人员) 和 Philipp Werner 博士 (食品化学家) 管理。

该公司在全球范围内为大约 1,500 名客户提供产品, 并雇用了超过 150 名员工。

早在 1974 年便制备了首批糖丸, 并交付德国制药业使用。此后, 生产和销售持续增加。

同时, pharm-a-spheres™ 品牌与糖丸产品组是公司最重要并且最大的部门。

20 世纪 80 年代初, 顺势疗法行业产品组 Globuli sacchari 成为另一个重要支柱。

以我们自己 pharm-a-spheres™ 糖丸为基础制备的膳食补充剂颗粒, 成功完善了客户的产品品类。

质量和品控具有最高优先级! 生产部门和公司自营实验室 (符合 EP 和 USP-NF 分析证书的所有参数都在公司自营实验室内进行分析) 堪称最先进的部门, 并且企业也通过了认证。

www.pharm-a-spheres.com

pharm-a-spheres™

Hanns G. Werner
GmbH + Co. KG



Hafenstraße 9
25436 Tornesch, Germany
☎ +49(0)4122/9576-0
sales@pharm-a-spheres.com
www.pharm-a-spheres.com